

### SALES TEAM

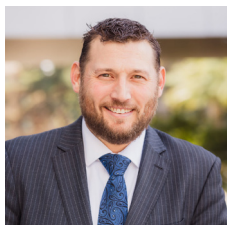
---



**Jon Eastman**  
Sr. Vice President, Central Region  
Direct: 949-769-6701  
[jeastman@shopoff.com](mailto:jeastman@shopoff.com)



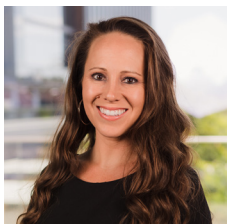
**Ted Breen**  
Vice President, Eastern Region  
Direct: 949-769-6712  
[tbreen@shopoff.com](mailto:tbreen@shopoff.com)



**Tyler Ingram**  
Internal Wholesaler  
Direct: 949-769-6702  
[tingram@shopoff.com](mailto:tingram@shopoff.com)

### NATIONAL ACCOUNTS

---



**Christy Hutchison\***  
Consultant, National Accounts  
Direct: 858-318-5153  
[christy@trustededgeadvisory.com](mailto:christy@trustededgeadvisory.com)

### INVESTMENT SERVICES

---

**Korinna Arellano**  
Senior Investment  
Services Manager  
Direct: 949-417-4463  
[karellano@shopoff.com](mailto:karellano@shopoff.com)

**Callie Barkdull**  
Senior Investment  
Services Associate  
Direct: 949-769-6738  
[cbarkdull@shopoff.com](mailto:cbarkdull@shopoff.com)

**Jessie Guerrero**  
Investment Services  
Associate  
Direct: 949-769-6725  
[jguerrero@shopoff.com](mailto:jguerrero@shopoff.com)

FOR BROKER-DEALER AND RIA USE ONLY - The material herein does not constitute an offer to sell nor is it a solicitation of an offer to purchase any security. Offers will only be made through a private placement memorandum to accredited investors and where permitted by law. Investments in the firm's limited partnership offerings involve a high degree of risk, including the possible complete loss of your investment, and they are illiquid with an uncertain liquidity date. Securities offered through Shopoff Securities, Inc. Member FINRA/SIPC.

1992-present as Asset Recovery Fund, Eastbridge Partners and Shopoff Realty Investments (formerly known as The Shopoff Group). William Shopoff is the Founder and Principal of all these entities. Performance has varied in this time frame with certain offerings having generated losses that are detailed in the track record. Past performance is not indicative of future results.

\*Independent consultants listed herein are not registered representatives of Shopoff Securities, Inc., are not associated persons of the broker-dealer, and are not authorized to offer or sell securities. These individuals provide limited consulting or relationship support services and are not compensated based on securities transactions.